

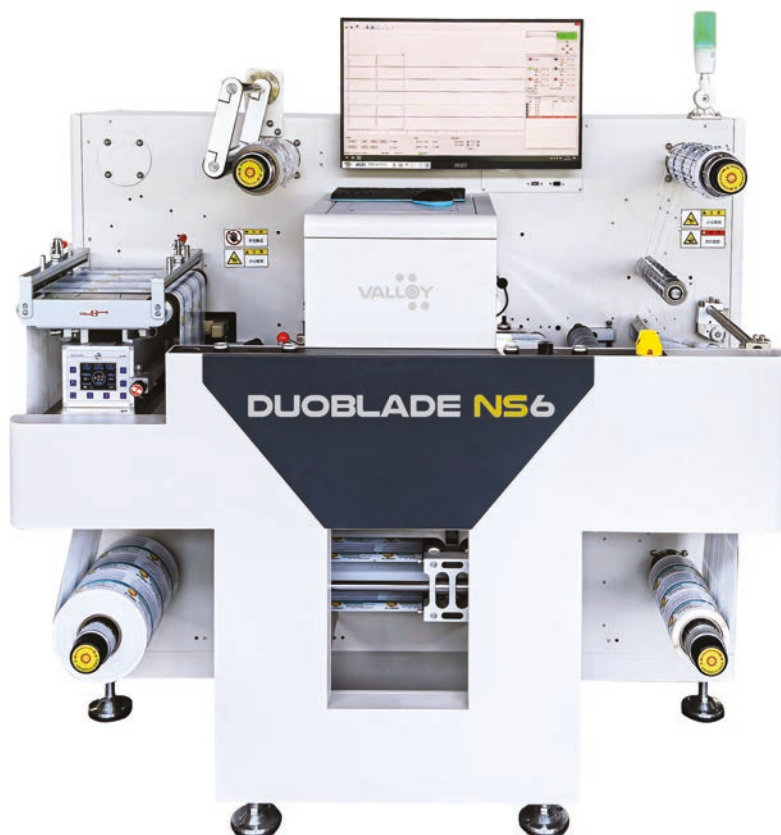


ON-DEMAND PRODUCTION OF LABEL & PACKAGE  
IN RIGHT TIME, RIGHT PLACE & RIGHT QUANTITY



# DUOBLADE NS6

Innovative revolution in digital knife die-cutter once again - electric knife depth control of each 6 heads!  
**SIX CUTTING HEADS / KNIFE DEPTH MOTOR CONTROL / 30% FASTER THAN DUOBLADE WS CUTTER / FASTER CCD MARK TRACKING / EMBEDDED PC WITH SOFTWARE / AUTOMATIC JOB CHANGE BY CCD**



## FEATURES

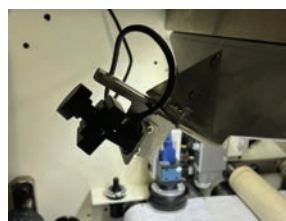
*Successor of DUOBLADE WS but much more powerful and Intelligent*



6-head system with automatic head-distance control by job detection of QR code using CCD camera



Individual servo-motor driven head height control for self-adjustment of knife depth



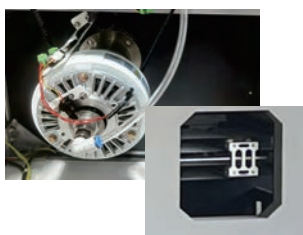
Matrix vision monitoring system to detect parts of weaker depth and adjust knife depth of each head automatically



Web-guide system for assuring straight feeding of substrate



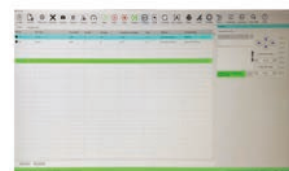
Strong X-Y driving by using thick lead screw actuators for heavy duty fast driving



Fully automatic magnetic-powder tension break and semi-rotary slider type tension control system



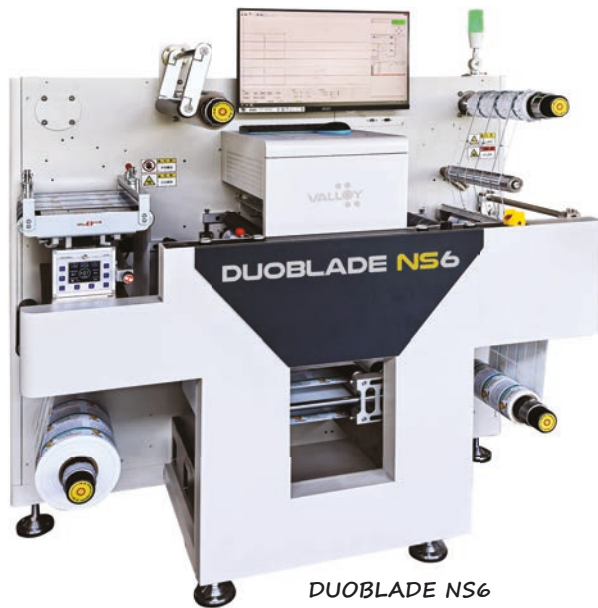
Embedded PC and monitor to ensure pre-setting of SW and related resources



New V.4.0 AI-Cut software is installed for automatic workflow with head distance/depth control, job change and hot-folder. (Customizable for other workflow)



ON-DEMAND PRODUCTION OF LABEL & PACKAGE  
IN RIGHT TIME, RIGHT PLACE & RIGHT QUANTITY



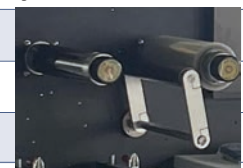
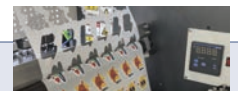
DUOBLADE NS6



New cutting head  
using servo motor  
instead of solenoid

## SPECIFICATIONS

Max. media roll diameter	500mm
Substrate roll width	40-350mm
Max. label width	330mm
Label length	Min. 10mm ~ Max. 500mm (4000mm length by multi-cut option)
Min. distance between heads	32.5mm
Laminating roll diameter	Max. 300mm
Waste roll diameter	Max. 460mm
Compatible file format	PDF, PLT, DXF (Driven by V4.0 AI CUT S/W)
Cutting speed	10m/min (7cm x 15cm x 4 rows of rectangles)
Qty of heads	6 heads (10U knives and holders)
Data connection	TCP/IP with dual-lan card of embedded PC
Die-cutting technology	Non-contacting type with tungsten steel rotary blades, Servo motor head
Cutting precision	± 0.1mm
Cutting tracking	Eye mark / QR by CCD or Black cut (Detection in 0.03s)
Slitting system	10~340mm interval, 7 units default (max. 15 units), 0.1mm accuracy, max. 70m/min
Machine size (L x W x H)	1540 x 1005 x 1636mm
Machine weight	Approx. 990kgs
Power supply	110-127 or 220-240 VAC, 50-60HZ, 2000WATTS
Warranty	13 month after shipment (except for consumables parts)
Included * No need of air compressor	Embedded PC with SW / Laminator / Waste Removal / Counting of jobs and length / Slitter / Web guide / CCD Camera / Automatic Tension Control
Options	Chopin-350 sheet cutter / Laminating backliner rewinder / Heated waste strip roller / Vision system for automatic knife depth control / Auto-stop by detecting labels on matrix / EPSON-Memjet inline connection module



VALLOY Incorporated  
Rm 1017-1018, DaeMyung Valeon, 127 Beobwon-ro, Songpa-gu, Seoul, 05836 KOREA  
Tel : +82-2-6082-5022 Fax : +82-2-445-5441 support@valloy.net www.valloy.com

