



ON-DEMAND PRODUCTION OF LABEL & PACKAGE  
IN RIGHT TIME, RIGHT PLACE & RIGHT QUANTITY



# DUOBLADE NX8

Innovative revolution in digital knife die-cutter once again - auto-control of knife depth for each 8 head!  
**8 CUTTING HEADS / VISION DRIVEN KNIFE DEPTH SELF-CONTROL / 30% FASTER THAN DUOBLADE WX / FASTER CCD TRACKING SPEED / EMBEDDED PC WITH SOFTWARE / AUTOMATIC JOB CHANGE BY CCD**

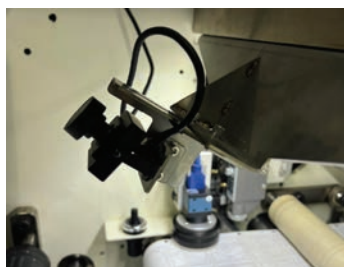


## FEATURES

*Successor of DUOBLADE WX but much more powerful and Intelligent*



8-head system with automatic head-distance and knife depth control by CCD QR detection and matrix vision monitoring system



Matrix vision monitoring system to detect parts of weaker depth and adjust knife depth of each head automatically



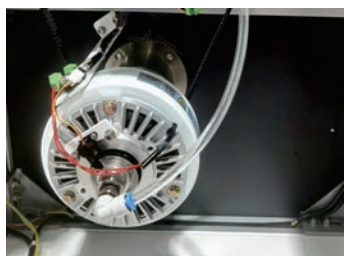
Heated matrix removal roller system with temperature control for easy separation of strong-glued labels



Embedded inline sheet cutting control system with vacuum plate, guillotine blade and collecting tray



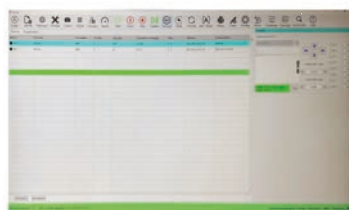
Strong X-Y driving by using thick lead screw actuators for heavy duty fast driving



Fully automatic magnetic-powder tension break and magnetic rodless cylinder type pneumatic tension control system



Embedded PC and monitor to ensure pre-setting of SW and related resources



New V.4.0 AI-Cut software is installed for automatic workflow with head distance/depth control, job change and hot-folder. (Customizable for other workflow)



ON-DEMAND PRODUCTION OF LABEL & PACKAGE  
IN RIGHT TIME, RIGHT PLACE & RIGHT QUANTITY



DUOBLADE NX8



New cutting head  
using servo motor  
instead of solenoid

## SPECIFICATIONS

Max. media roll diameter	470mm
Cutting media width	210-360mm
Max. label width	330mm
Label length	Min. 10mm ~ Max. 700mm (6000mm length by multi-cut option)
Min. distance between heads	32.5mm (new head)
Laminating roll diameter	Max. 290mm
Waste roll diameter	Max. 460mm
Compatible file format	PDF, PLT, DXF (Driven by V4.0 AI CUT S/W)
Cutting speed	12m/min (7cm x 15cm x 4 rows of rectangles)
Qty of heads	8 heads (10U knives and holders)
Data connection	TCP/IP with dual-lan card of embedded PC
Die-cutting technology	Non-contacting type with tungsten steel rotary blades, Servo motor head
Cutting precision	± 0.1mm
Cutting tracking	Eye mark / QR by CCD or Black cut (Detection in 0.03s)
Slitting system	10~350mm interval, 9 units default (max. 15 units), 0.1mm accuracy, max. 70m/min
Machine size (L x W x H)	2035 x 1340 x 1695mm
Machine weight	Approx. 1300kgs
Power supply	110-127 or 220-240 VAC, 50-60HZ, 2500WATTS
Warranty	13 month after shipment (except for consumables parts)
Included * air compressor is optional	Embedded PC with SW / Laminator / Waste Removal / Counting of jobs and length / Slitter / Web guide / CCD Camera / Automatic Tension Control
Options	Embedded sheet cutter / Laminating backliner rewinder / Heated waste strip roller / 2nd (UP) rewinder / Vision system for automatic knife depth control / Auto-stop by detecting labels on matrix



VALLOY Incorporated  
Rm 1017-1018, DaeMyung Valeon, 127 Beobwon-ro, Songpa-gu, Seoul, 05836 KOREA  
Tel : +82-2-6082-5022 Fax : +82-2-445-5441 support@valloy.net www.valloy.com

