



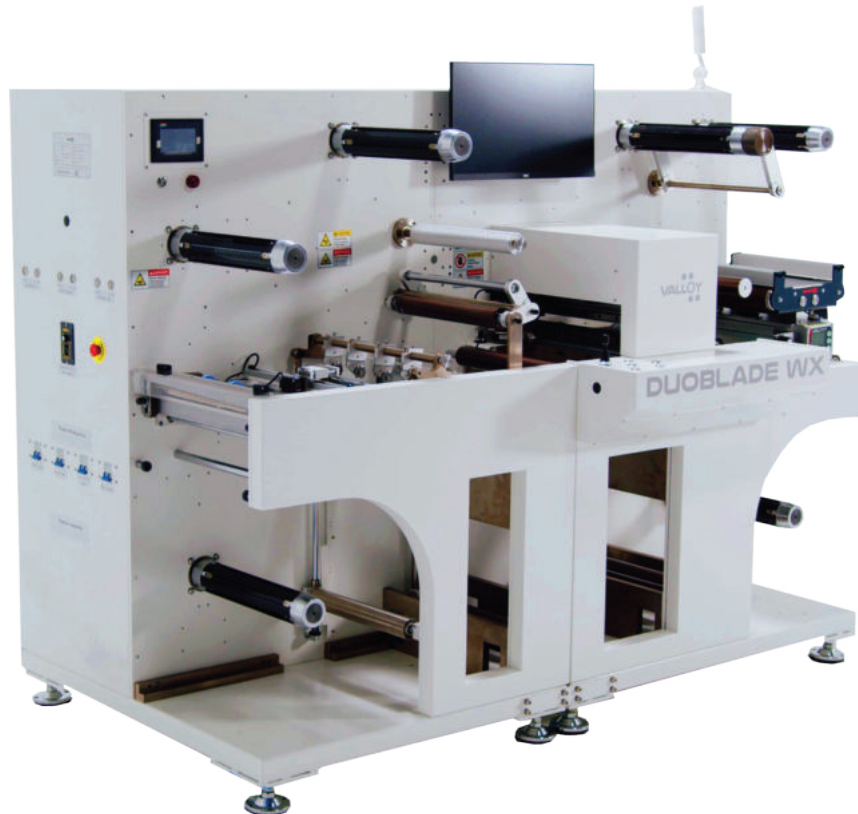
ON-DEMAND PRODUCTION OF LABEL & PACKAGE
IN RIGHT TIME, RIGHT PLACE & RIGHT QUANTITY



SPECIALIZED SOLUTION
FOR DIGITAL LABEL FINISHING

DUOBLADE WX

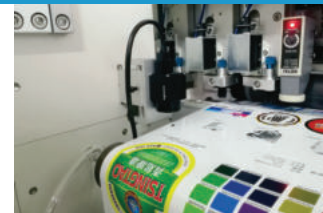
The most ideal digital blade cutter alternative to laser cutter
Supporting both of Roll to Sheet & Roll to Roll



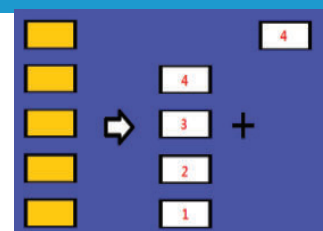
FASTER THAN EVER

- **All-In-One solution**
Lamination, Rewinder for the Lamination Backing, matrix removal, slitting, trimming, sheeting
- **Artificial Intelligence applied**
CCD camera recognizes barcode to select job automatically
Distance between heads can be adjusted automatically by job data
- **Trajectory Optimization**
It automatically calculates optimal usage of heads in each step of cutting for a specific job
- **9M/min cutting speed (10cm x 10cm rectangles)**
DUOBLADE WX has single station with 4 heads as default
* DUOBLADE WX III (2021) has 3 stations (12 heads) to reach 27m/min speed.
- **Max. 350mm x 600mm size label cutting**
- **Embedded PC with big LCD touch screen**

Artificial Intelligence
Automatic Job Change

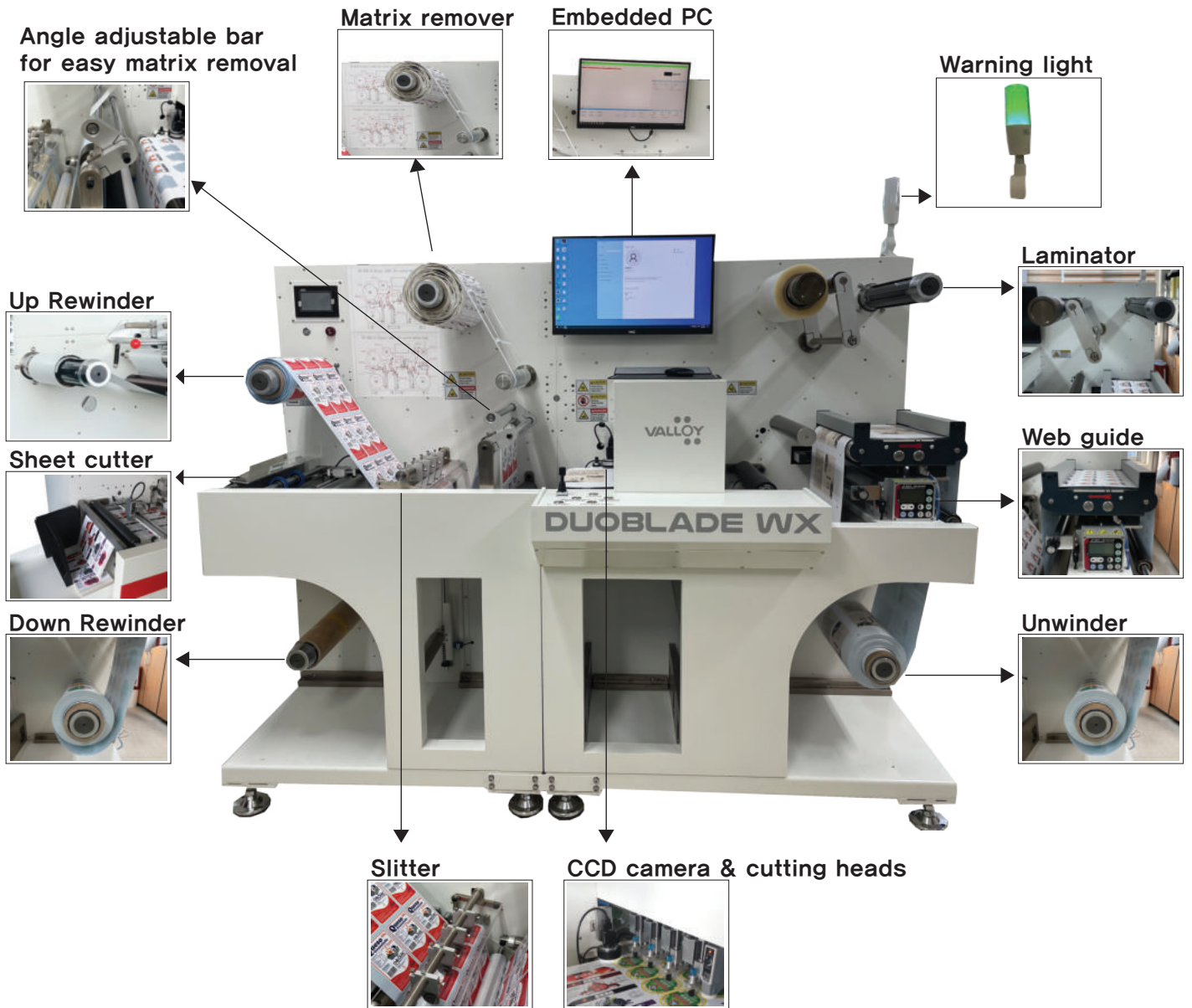


Trajectory Optimization
Optimized usage of heads





ON-DEMAND PRODUCTION OF LABEL & PACKAGE
IN RIGHT TIME, RIGHT PLACE & RIGHT QUANTITY



SPECIFICATION

Max. media diameter	450mm	Cutting accuracy	0.05mm
Media width	100 - 350mm	CODE SCANNER	CCD Camera
Max. label size	330mm x 600mm	MARK SENSOR	Reflective photoelectric sensor
Tension system	6-axis automatic tension	Machine dimension	200cm(L) x 119.5cm(W) x 157.5cm(H)
Max. cutting speed	9m/min (single unit)	Machine weight	1200kgs
No. of cutting heads	4	Power supply	100-240V AC, 2000W
Slitter	4 (Max. 15)	Option	Sheeter
Web guide	Ultrasonic guided correction	Warranty	1 year

